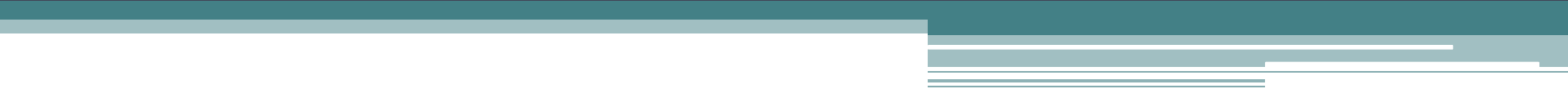


University of Connecticut Introduction to Kuali Financial System January 2010



Today's Presenters

- Charles Eaton, Office of the Controller
- Glen O'Keefe, Office of the Bursar
- Annette Pavone, Accounting Office
- Nancy Patrylak, Purchasing
- Terri Richard, Accounts Payable

Presentation Outline

- Brief history of FRS at Uconn
- Kualo Organization
- Kualo Financial System
- FRS verses KFS
- KFS Proof of Concept
- KFS Proof of Concept Demo
- Other Resources

Replacing FRS

- FRS used at UConn since 1991
- Legacy systems
- Useful life is ending
- Web-based systems:
 - Are more user-friendly
 - Provide greater flexibility
 - Are more powerful

History of Kualii

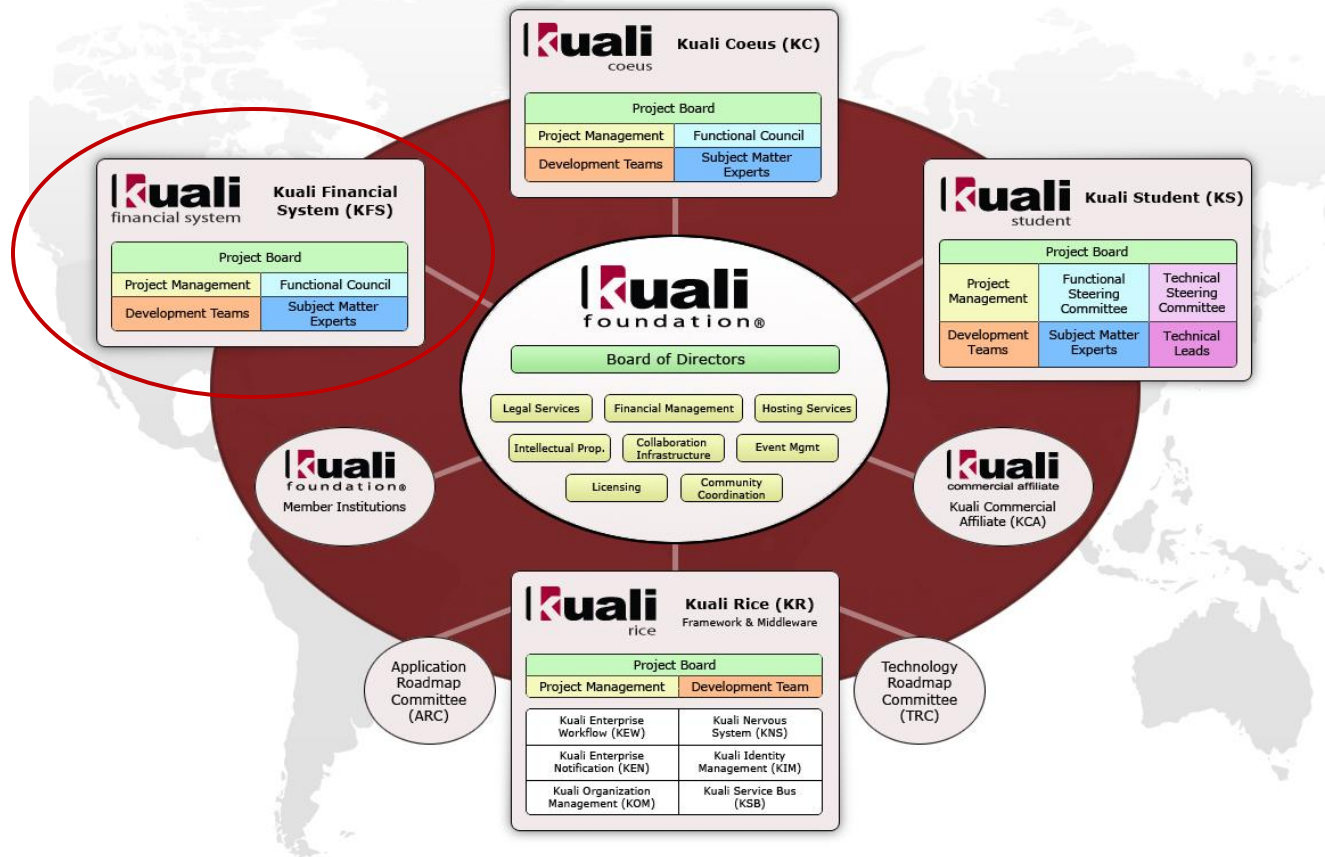
- Turn of the millennium: IU looks into replacing FIS, and explores a collaboration option with NACUBO
- 2005: KFS receives a \$2.5 million grant from the Mellon Foundation to complete software development
- Founding partners include IU, U of Arizona, U of Hawaii, Michigan State U, San Joaquin Delta Community College, Cornell U, NACUBO and rSmart

Kuali Foundation

- Open source administrative software –
 For higher education, by higher education
- Growing community of universities, colleges, businesses and other organizations
- Values include:
 - Open source licensing
 - Community source development model
 - Collaboration
 - Transparency
 - Modularity
 - Scalability
- “Kuali” is Malaysian for a small wok – a humble, but essential tool

Kuali Foundation, cont.

The Organization of Kuali



Kuali Foundation Membership

- Members get involved in sustaining and evolving Kuali software and community
- Members contribute staff or \$ to Kuali project(s)
- Functional, technical or administrative support
- Current membership:
 - Over 30 colleges and universities
 - 10 commercial affiliates
 - Other foundations, organizations

Kuali Projects

- Kuali Financial System
- Kuali Coeus – Research Administration/Compliance
- Kuali Student – Student Administration
- Kuali Rice - Infrastructure
- Kuali OLE - Open Library Environment

KFS Partners

- Colorado State University
- Cornell University
- Indiana University
- Indiana University Foundation
- San Joaquin Delta Community College
- Michigan State University
- University of Arizona
- University of Hawaii
- University of Maryland
- University of Southern California
- University of California
 - UC-Office of the President
 - UC-Davis
 - UC-Irvine
 - UC-Santa Barbara
- NACUBO
- rSmart

Open Source / Community Source Software

- Created and sustained through collaboration with other members
- Not purchased from vendors – software is free
- Less expensive – no licensing fees, etc.
- Opportunity to share and learn from staff at top colleges / universities in the world
- Continuous improvement
- Modifications can be shared
- Users retain control through community control

Kuali Days

- UConn Participation – 2006, 2007, 2008, 2009
- Opportunity to:
 - Learn about KFS
 - Meet staff from other colleges / universities
 - Establish contacts with Kuali members
 - Hear success stories:
<http://www.youtube.com/watch?v=okI9J10KGiA&feature=related>
 - Get inspired!

Current Users of KFS

- Strathmore University – July 2007
- Colorado State University – July 2009
- San Joaquin Delta College – July 2009
- Naval Postgraduate School – October 2009

Current Implementers of KFS

- University of Arizona
- Indiana University
- University of Hawaii
- Michigan State University
- Cornell University
- University of Southern California (Partial)

Kuali Financial System

- Enterprise-level financial system based on Indiana University's FIS
- Modular architecture (only implement what is needed)
- Web-based operating environment
- Workflow – E-docs

FRS vs. KFS

FRS

- General Ledger (Balance Sheet) and Subsidiary Ledger (Income and Expenses)
- Accounts are 6 digits (292260)
- Account controls and subcodes
- No sub-accounts or sub-object codes

KFS

- Accounts are self-balancing – contain balance sheet and income and expense items in the same account
- Accounts are 7 digits: 0 + current FRS account number (0292260)
- Object codes only ([Example](#))
- Ability to use sub-accounts and sub-object codes

FRS vs. KFS - cont.

FRS

- Department Numbers – 5 digits
- Responsible Person
- Account Balances only include posted transactions
- No drill-down feature

KFS

- Organization numbers – 4 digits/letters ([Example](#))
- Fiscal Officer (also must have an Account Supervisor and Account Manager)
- Account Balances can include posted, approved, or pending
- Drill down from Balance Inquiry to actual transactions

FRS vs. KFS - cont.

FRS

- Cannot upload into FRS with Excel
- Limited to 2 transaction references
- No workflow
- No attachments and notes

KFS

- Can upload directly into accounting lines on an e-doc
- Ability to add additional organization references
- Quali Enterprise Workflow embedded into the transactions
- Attach files and notes to the transactions

FRS Purchasing vs. KFS - PURAP

FRS

- Real time requisitioning – paper-based
- Encumbrances processed in batch overnight
- Related backup (i.e. quotes) are faxed/emailed
- PO's print and reprint overnight
- Vendors are limited to 10 addresses per vendor

KFS

- Real time requisitioning using Quali Workflow
- Encumbrances processed in real time
- Attachments made to requisition documents
- PO's print and reprint in real time
- Vendor #'s can accommodate 999 addresses

FRS Purchasing vs. KFS - PURAP

FRS

- Requisitions must be generated from beginning for each purchase
- Requisitions, PO's, applicable payments, etc. in different physical locations
- Where is my document?

KFS

- Repetitive requisitions can be saved and sent as new documents without recreating
- All transactions and related documents can be viewed on the same screen
- Approval and processing status is always visible in the Route Log

FRS A/P vs. KFS - PURAP

FRS

- CO17's and Direct Payments
- Paper fed documents
- Approval via hand signature
- View payment status after processing
- Navigation by screens
- Limited searches

KFS

- Disbursement Voucher
- Electronically fed
- Electronic approval
- Ongoing tracking of document status in the Route Log
- Navigation by tabs
- Robust search capabilities (by document #, date, created by, document type, etc.)

KFS Proof of Concept (Sandbox)

- Developed by rSmart
- Loaded UConn's Chart of Accounts, beginning balances, vendors in KFS
- Provides the opportunity for UConn to gain hands-on experience with KFS
- Can initiate maintenance and financial transactions, display general ledger balances, etc.
- Get feedback from UConn users before implementation
- Helps prepare for an implementation
- uconn.kfs.rsmart.com

KFS Proof of Concept Demo

- Balance Inquiry
- New Sub-Account
- Distribution of Income and Expense
- Disbursement Voucher
- Requisition

KFS - Other Resources

- **Kuali.org Test Drive**
 - Not UConn data
 - Accounts Receivable
 - Capital Assets (CAM)
- **Kuali.org Resources**
 - Glossary
 - Acronym Guide
 - Overview Guides, User Guides
 - Documentation
 - Functional and Technical
 - Detailed step-by-step)

END

A decorative horizontal line consisting of a solid teal bar on the left, followed by a white bar on the right. The white bar features a series of horizontal lines of varying lengths and colors (teal, white, teal) that create a layered, graphic effect.

FRS to KFS Conversion - Object Codes [\(Return\)](#)

FRS

- SL Subcodes
 - 0130 – Con.Ed.Fee – Spring
 - 2010 – Advertising
 - 3140 – Office Supplies
- GL Account Controls
 - 1100 – Claim on Cash
 - 1380 – A/R – Other
 - 2430 – Other Accruals
 - 4081 – Gifts, Donations, Scholarships-Fndn

KFS

- Object Codes
 - 0130 – Con.Ed.Fee – Spring
 - 2010 – Advertising
 - 3140 – Office Supplies
- Object Codes
 - A100 – Claim on Cash
 - A380 – A/R – Other
 - B430 – Other Accruals
 - Do81 – Gifts, Donations, Schlrshp

FRS to KFS Conversion - Organizations ([Return](#))

FRS Departments

- 10100 – President Ofc
- 22702 – Animal Research Svc
- 22751 – National Undersea Res Ctr
- 30400 – OFC of CFO
- 35040 – Jorgensen Perform Arts

KFS Organizations

- A100 – President Ofc
- C702 – Animal Research Svc
- C751 – National Undersea Res Ctr
- F400 – OFC of CFO
- G040 – Jorgensen Perform Arts