

The OLE Project: Re-conceptualizing Technology for Modern Library Workflow – An SOA Approach

Robert H. McDonald, Indiana University

Beth Forrest Warner, University of Kansas

Michael Winkler, University of Pennsylvania

Do You Tweet?

#ent09

#ole

Follow us at <http://twitter.com/oleproject>

TweetDeck - <http://www.tweetdeck.com/beta/>

QUESTION 1

Has your campus implemented
any form of SOA?

1. YES 2. NO 3. DON'T KNOW

To vote, text to 41411
"RETURN ID798 option"
Ex. "RETURN ID798 1"

Or go to <http://m.textthemob.com/id798>

Question 1

<http://www.textthemob.com/print/798>

Prezi

[Prezi Clip for OLE](#)

What is SOA?

Service Oriented Architecture

Service

System capabilities that provide access to functions and data are appropriately exposed to other components (applications, devices, networks, etc.)

Oriented

Uses “open” interoperability protocols

Architecture

In its purest form, it's the connection of systems (simple or complex)

QUESTION 2

In your opinion, is SOA and the interoperability that it offers a good idea?

1. YES 2. NO 3. CAN'T DECIDE

To vote, text to 41411
"RETURN ID799 option"
Ex. "RETURN ID799 1"

Or go to <http://m.textthemob.com/id799>

Question 2

<http://www.textthemob.com/print/799>

Enterprise Level Interactions

- Library business systems need to be better integrated and interoperable with campus business and learning systems.
 - Libraries must interact with and leverage other key systems, including financial, identity management, course management, and content repository systems.

QUESTION 3

Should library systems be better integrated with campus business & learning systems?

1. YES 2. NO 3. CAN'T DECIDE

To vote, text to 41411

"RETURN ID800 option"

Ex. "RETURN ID800 1"

or go to <http://m.textthemob.com/id800>

Question 3

<http://www.textthemob.com/print/800>

Leveraging Enterprise Systems & Content

- Better interoperability and integration with:
 - Campus identity management systems
 - Leveraging both on-campus and externally (consortiums)
 - Better ability to work with trusted peers (ex. Shibboleth)
 - Campus HR and Student systems
 - Why copy faculty and student information into the ILS?
 - Campus financial & purchasing systems
 - Take advantage of existing vendor information, invoice management, bill paying, etc.
- Will require hard discussions of policies and workflow, but pay-off is potentially more secure data (fewer copies) and more efficient processes

Transforming Teaching and Learning

The screenshot shows a web browser window displaying the Oncourse application. The address bar shows the URL: <https://oncourse.iu.edu/portal/site/1097692600173-1912/page/1097692600629-1917>. The page title is "Oncourse : BL OCCL DEMO 60059 : Resources".

The interface includes a navigation menu on the left with the following items: Home, Calendar, Announcements, Syllabus, Resources (selected), Discussion, Assignments, Chat Room, Tech News, Web Content, Email Archive, Library Resources, Site Setup, Official Final Grades, Forums, Gradebook, and Messages.

The main content area shows the "Resources" section for "BL OCCL DEMO 60059". The location is "BL OCCL DEMO 60059 Resources / smail". Below this, there is a table of resources with columns for Title, Access, Created By, Modified, and Size.

Title	Access	Created By	Modified	Size
smail				
25x Testing	Entire site	Steve Smail	Jun 21, 2008 2:08 am	10 items
102208	Entire site	Steve Smail	Oct 22, 2008 1:32 pm	2 citations
102308.new	Entire site	Steve Smail	Oct 23, 2008 5:51 am	2 citations
102308.new-iub	Entire site	Steve Smail	Oct 23, 2008 5:38 am	3 citations
102308.old	Entire site	Steve Smail	Oct 23, 2008 5:25 am	1 citations
111308	Entire site	Steve Smail	Nov 13, 2008 7:58 am	1 citations
Bigfoot	Entire site	Steve Smail	Nov 19, 2008 3:56 pm	3 citations
Bird	Entire site	Steve Smail	Nov 11, 2008 12:25 pm	2 citations

Curating and Preserving Our Content

The image shows a screenshot of a web browser displaying two websites. The background website is KU ScholarWorks, featuring a search bar, navigation links like 'Home', 'Communities & Collections', and 'Sign on to:'. The foreground browser window shows the HathiTrust website, which has a header with the HathiTrust logo and navigation tabs. The main content area includes a 'Welcome to the Shared Digital Future' section with text about the repository's mission and a 'March Activities' sidebar with a list of updates.

KU ScholarWorks About KU ScholarWorks

The University of KANSAS

Search KU ScholarWorks: Go [Advanced Search](#)

→ [Home](#)

Browse

- Communities & Collections
- Titles
- Authors
- By Date

Sign on to:

- Receive email updates
- My KU ScholarWorks authorized users
- Edit Profile
- Help
- About KU ScholarWorks

digital library initiatives

Copyright © 2003

HATHI TRUST a shared digital repository

About Access Information Partnership Repository & Services Updates

HathiTrust FAQ Mission & Goals Community Governance Press

>Welcome to the Shared Digital Future

HathiTrust is a bold idea with big plans.

As a digital repository for the nation's great research libraries, HathiTrust ([listen to pronunciation](#)) brings together the immense collections of partner institutions.

HathiTrust was conceived as a collaboration of the thirteen universities of the Committee on Institutional Cooperation and the University of California system to establish a repository for these universities to archive and share their digitized collections. Partnership is open to all who share this grand vision.

HathiTrust is a solution.

To prospective partners, HathiTrust offers leadership and reliability.

It provides a no-worry, pain-free solution to archiving vast amounts of digital content. You can rely on the expertise of other librarians and information technologists who understand your needs and who will address the issues of servers, storage, migration, and long-term preservation.

You will shape HathiTrust.

Growing the world's largest library won't happen overnight. You've heard of other digital libraries. This one is different in concept and scale. Its greatest promise—and challenge—rests in defining how to serve researchers in the digital age. Together we will develop and refine the services needed to search and use such a large digital collection, and realize collectively our greatest potential as a library community. Together we will

March Activities

- HathiTrust Datasets Available for Research
- Indiana University Mirror Site Up and Running
- April Ingest Targeted for Indiana University and University of California Content
- New Storage Purchased
- Data API Specification Released for Public Comment
- Temporary Public Discovery Interface Release in April
- Large-scale Search Update
- New Growth
- April Forecast

Done

zotero

Creating Options





Defining New Functionality
Redefining the Old

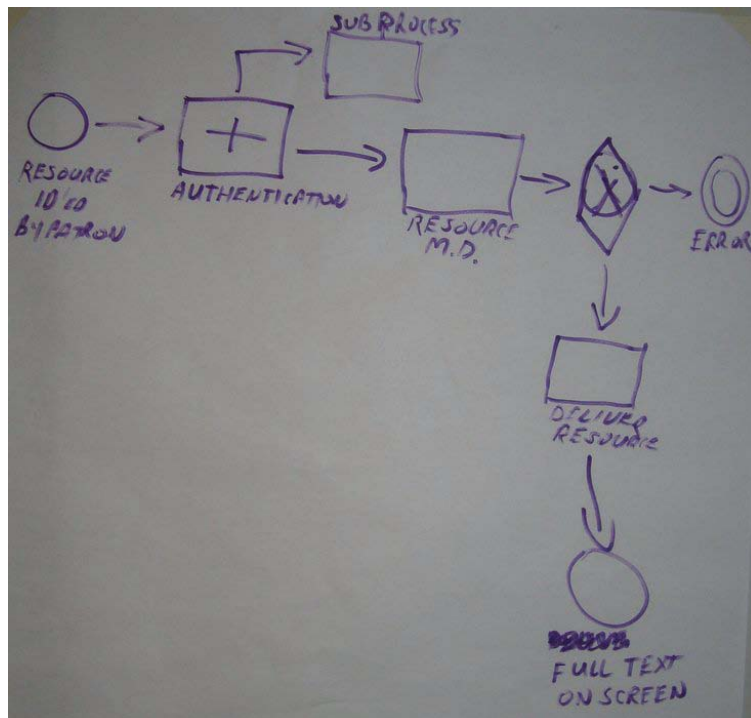
What is BPM

- BPM = Business Process Modeling
- Design approach
- BPM process
 - What needs to be done
 - How to do it, in what order, and contingencies
 - Separate from the systems and services that do the work
 - Mid-level detail
- Necessary before determining shared processes as part of SOA

Example of Modeling a Process

- <http://www.youtube.com/watch?v=S-Mbr31f2dg>

(no sound)



Person brings book → counter
Book is scanned (Barcode)
Patron's card is scanned
Check that book ~~can~~ is eligible
for circulation
Check that Patron is eligible
to borrow item
Check loan period
Item is charged to user
Status ^{of item} changed to available
~~Status~~
Book desensitized or stamped
Patron leaves w/book

Process Example

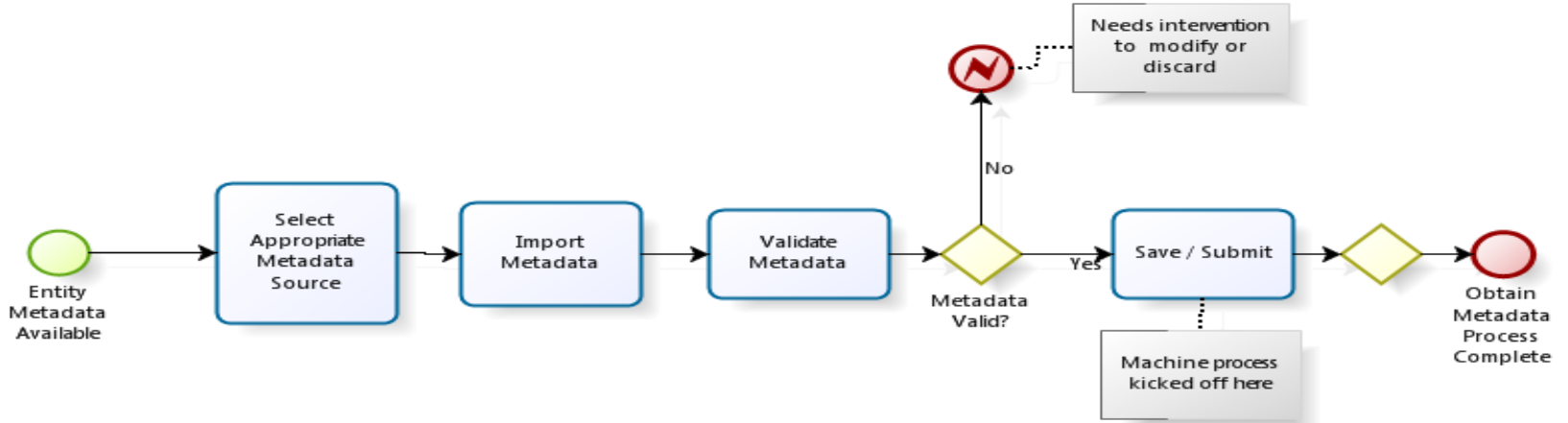
Select entity / create metadata

<http://oleproject.org/overview/ole-reference-model/select-entity/select-entity-obtain-metadata/>

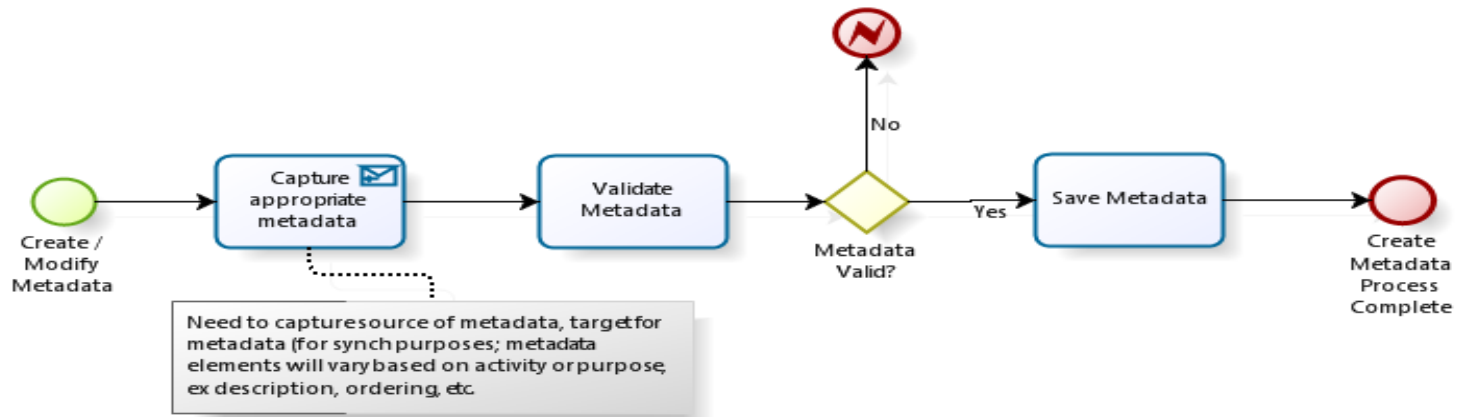
Create list of potential resource needs, place in "shopping cart". Could contain gifts, approval plan items, firm orders, Ill requests, reserve requests, remote location requests, publication references, trial databases.

SELECT ENTITY

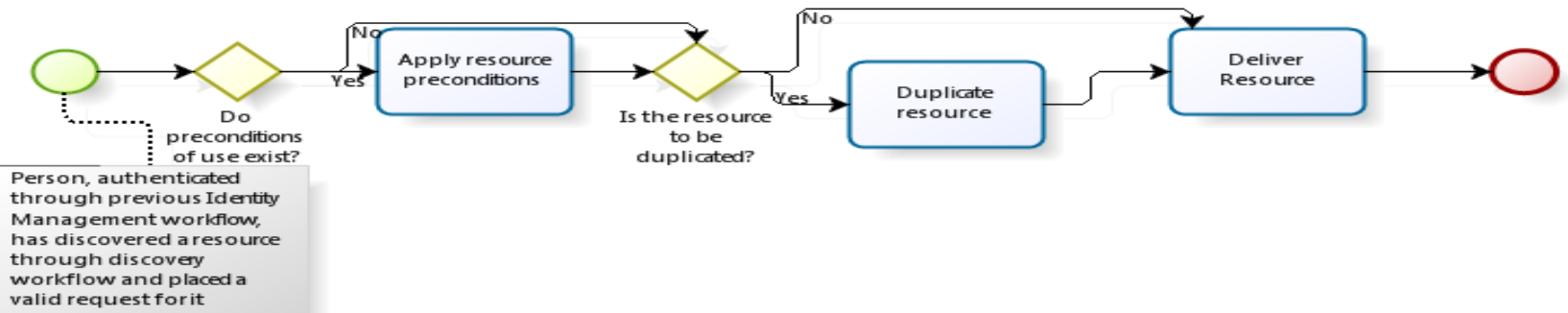
Obtain Metadata Workflow / Use Case



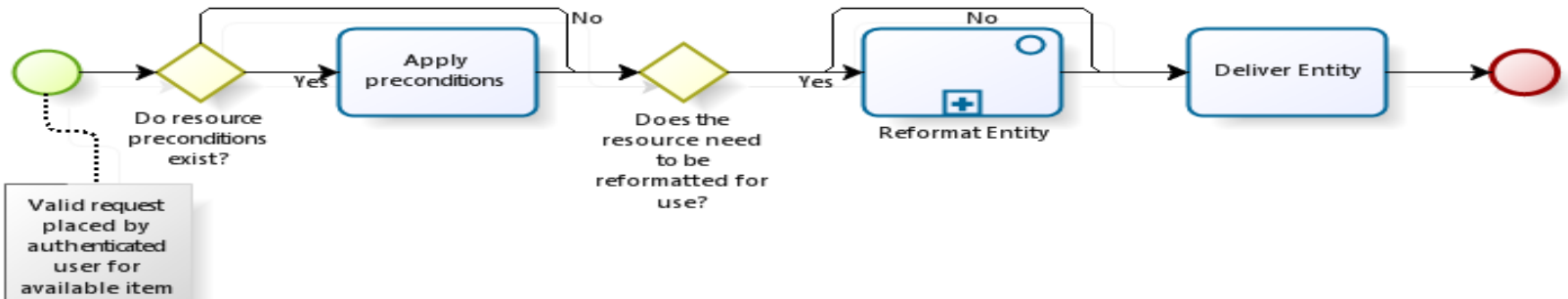
Create Metadata Process



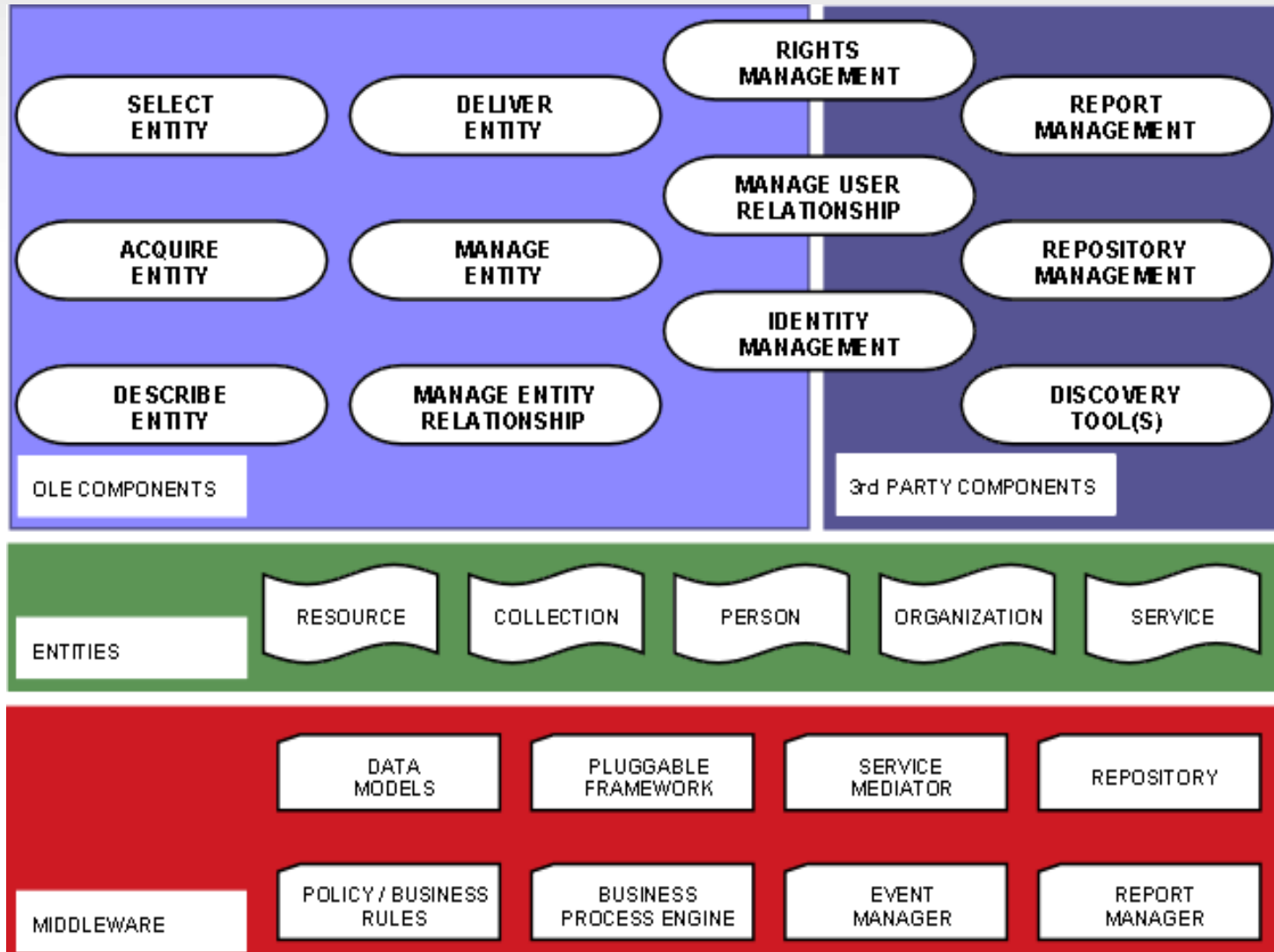
Supply Entity Workflow / Use Case



Supply Entity Process



OLE Reference Model



QUESTION 4

In ten years, if it isn't digital, it will be invisible.

1. TRUE 2. FALSE 3. CAN'T DECIDE

To vote, text to 41411

"RETURN ID801 option"

Ex. "RETURN ID801 1"

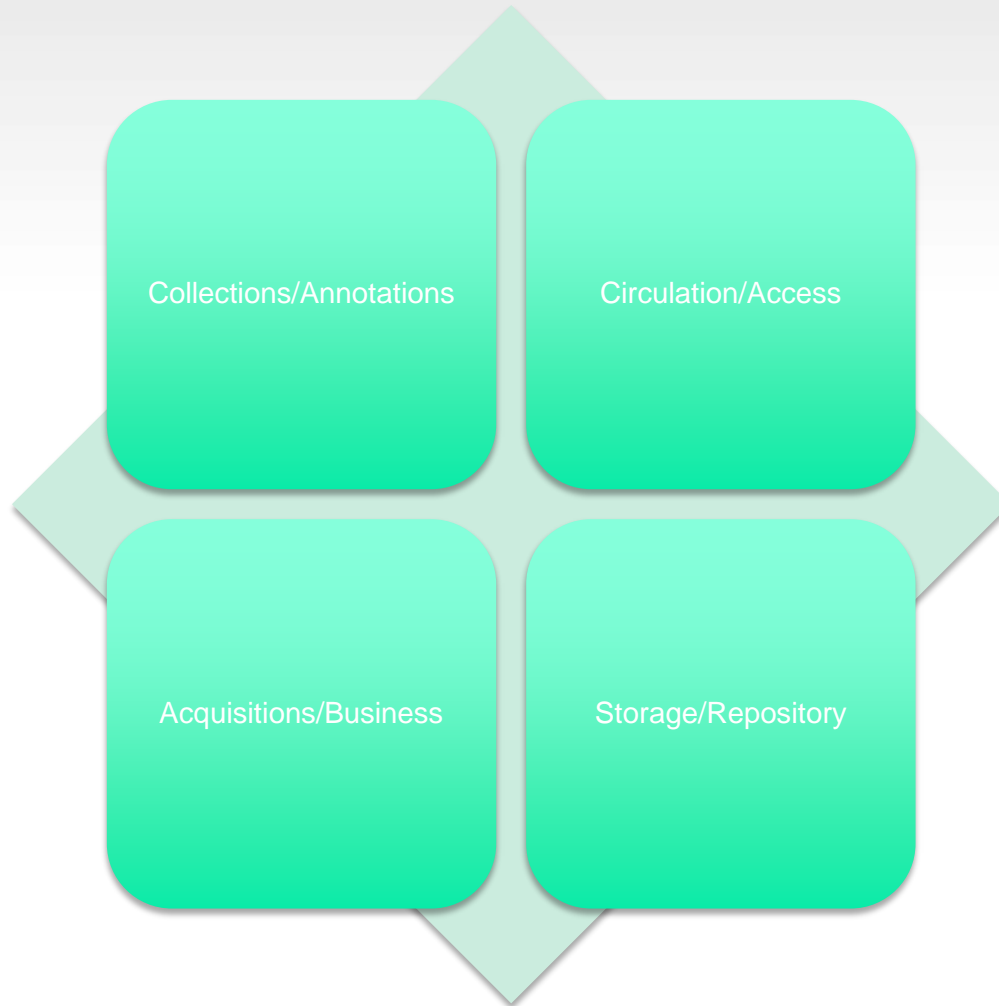
or go to <http://m.textthemob.com/id801>

Question 4

<http://www.textthemob.com/print/801>

Shared Data/Shared Workflow

Shared Data



Shared Workflows



Build Plan

- Mellon Foundation Matching Funding

- Two Year Timeline

- Year 1 Deliverables (Will Focus on one of these)

- A fully functioning core of services and framework – the OLE Core & Components

- ①Management of Electronic Resources Services

- Leased eContent

- Owned eContent

- ②Peer Resource Sharing Services

- Sharing content – peer to peer

- Sharing workflow – consortial

- ③Acquisitions Services

- Will be the same as MER

- Will add EDI/Direct MER

- ④CRM

- unique service in this space

- service to whole institution

- track usage and needs of clients over time – looking for an LTR

Build Plan

- Two Year Timeline

- Year 2 Deliverables

- Integrations

- EDI/Local ERP

- Discovery Interface (broker for multi-discovery use)

- Data Migration Services

- registries and utilities

- orchestrations

- define workflows to match relevant, local resource set

- determine optimum data flows including effort distribution and sharing

- functional scope

- meet the business needs of a research or academic library

- allow things to be turned off

Build Plan

Use Existing Systems

Existing Data Feeds

Open ERM Data

Shared Database Feeds

bX recommender

GoogleBooks

OpenLibrary

Existing Discovery Tools

WorldCat Local

VueFind

Blacklight

XC (eXtensible Catalog Tools)

LibraryFind

Endecca

Build Plan

Use Existing Pieces

RICE Middleware

Kuali Nervous System (KNS)

Kuali System Bus (KSB)

Kuali Enterprise Workflow (KEW)

Kuali Enterprise Notification (KEN)

Kuali Identity Management (KIM)

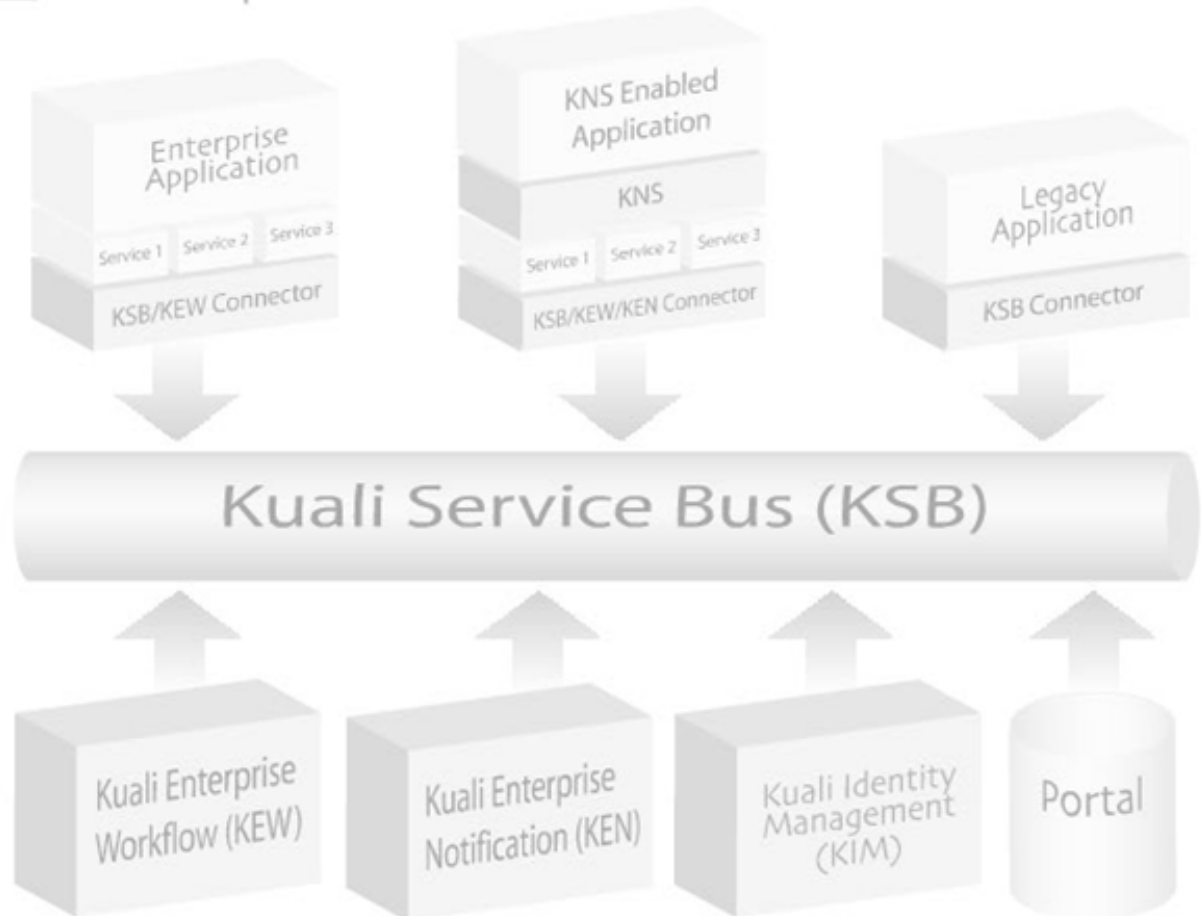


RICE 
software development simplified

Academic Enterprise (ERP)

Academic Enterprise

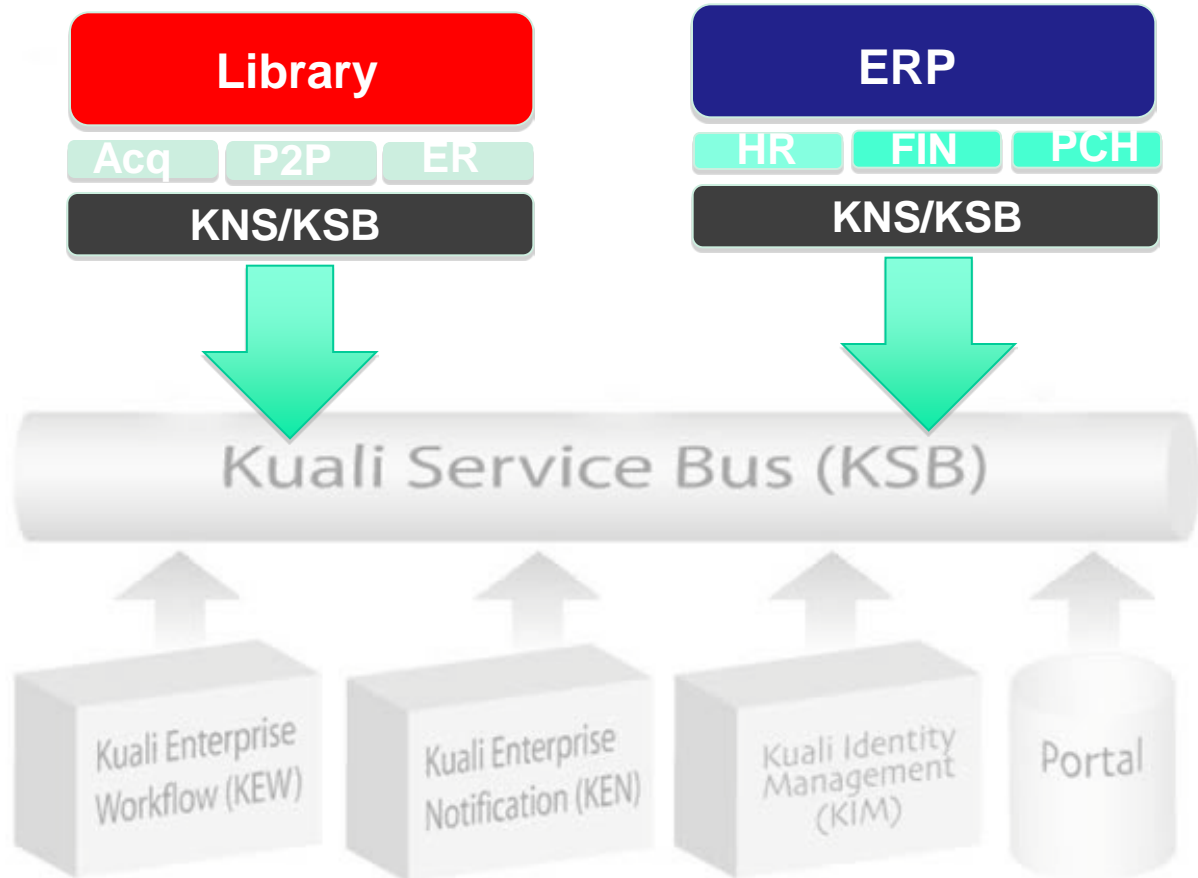
■ Rice Components



Library Enterprise

Library as Academic
Enterprise Partner

Rice Components



Build Plan

OLE Project Timeline (design phase thru release 2.0)

Draft - 4/7/09

activity	Jul-08	Oct-08	Jan-09	Apr-09	Jul-09	Oct-09	Jan-10	Apr-10	Jul-10	Oct-10	Jan-11	Apr-11	Jul-11	Oct-11	
	year 1				year 2				year 3				year 4		
specification & service modeling (0)	ole design project														
service design (0)			process teams												
develop build proposal (0)				build team											
technical architecture (1)					kuali rice				ole core						
data model & data dictionary (1)					data model & data dictionary			new entity relationships							
service programming (2)						core services	services for release 1.0			services for release 2.0					
enterprise integrations (3)						IdM & financial systems		order systems	other local, domain & network systems						
process orchestration & rules (1,2,4)								release 1.0			release 2.0				
testing (4)						framework & data model	release 0.x - 1.0		framework & data models	integrations	processes & workflow	release 2.0			
protocol & data binding (1,2,3)							EDI, Editur & local ERP		NSIP, SRU, etc						
user interface (4,5)							administrative & migration tools			administrative & migration tools					
training (1,2,3,4,6)					framework (1,2,3,6)			release 1.0 (4,6)			ole system (4,6)				
implementation & process migration (4,6)								release 1.0 implementation			release 2.0 implementation				

roles	id
ole design partners	0
ole project core	1
contract programmers	2
integration programmers	3
domain experts	4
UI programmers	5
trainers & consultants	6

QUESTION 5

In five years, most enterprise systems will be run in the cloud.

1. TRUE 2. FALSE 3. CAN'T DECIDE

To vote, text to 41411
"RETURN ID802 option"
Ex. "RETURN ID802 1"

or go to <http://m.textthemob.com/id802>

Question 5

<http://www.textthemob.com/print/802>

New Models/New Paradigms

1. Where do you see the library in terms of the academic enterprise and its infrastructure in the next five years?
2. How will the relationship between the library and any centralized information technology or research information technology group within your organization potentially change in the next five years?

Comments



Pat Steele

Ruth Lilly Dean of University Libraries

Indiana University

Steele Video 1



Steele Video 2



Comments



Marianne I. Gaunt

*Vice-President for Information
Services and University Librarian*

Rutgers University

Gaunt Video 1



Gaunt Video 2



Comments



Jeremy Frumkin

*Chief Technology Strategist and
Assistant Dean*

University Library

University of Arizona

Frumkin Video 1



Frumkin Video 2



Questions?



Thank you!

Thanks to the Andrew W. Mellon Foundation for
OLE Funding!

What did you think?

- Your input is important to us!
- Click on “Evaluate This Session” on the Enterprise 2009 program page.